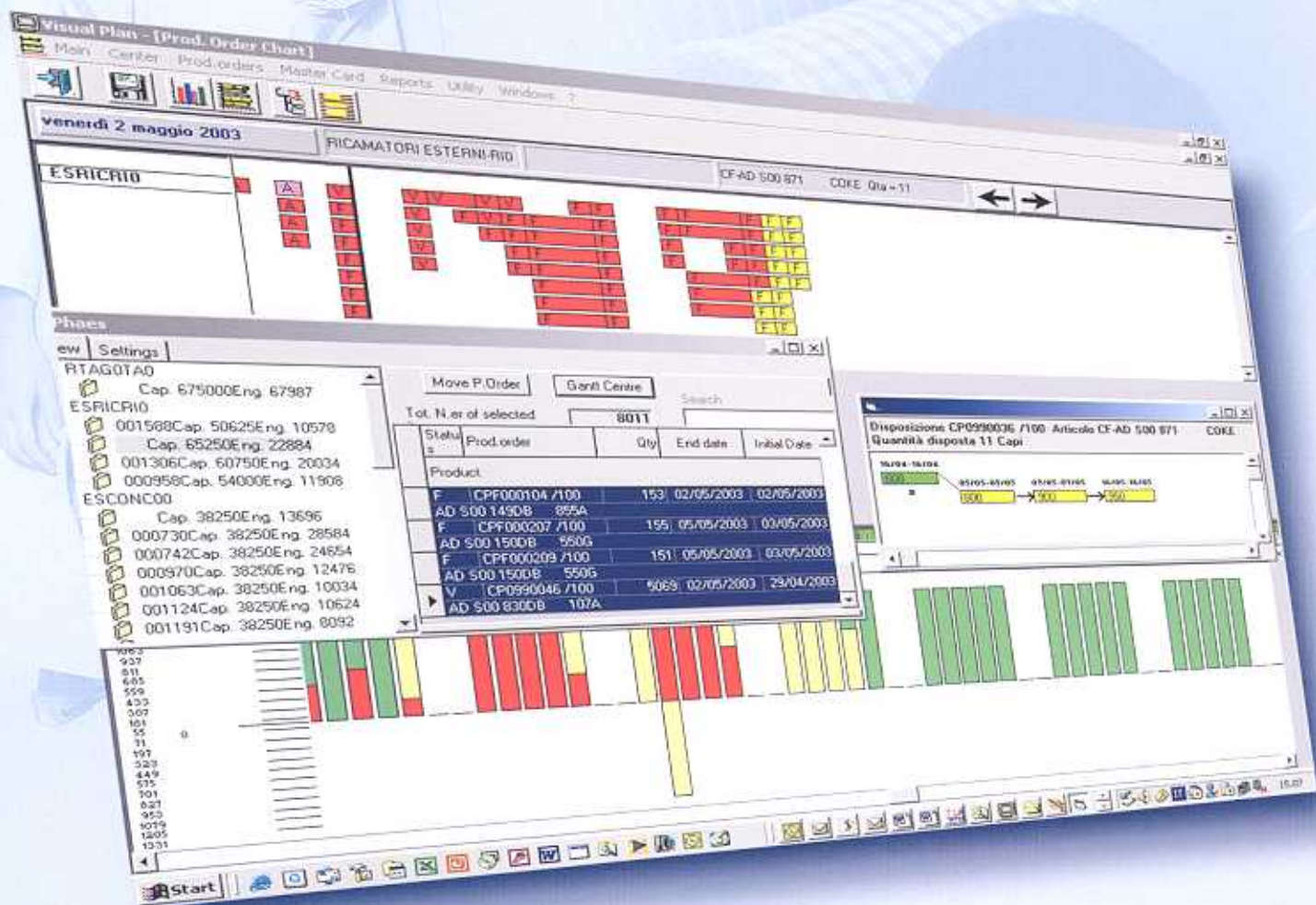


# VISUAL-PLAN FASHION

VISUAL-PLAN FASHION ALLOWS, THROUGH A REAL-TIME DISPLAY, GRAPHICAL AND INTERACTIVE PLANNING OF PRODUCTION PROCESS FOR APPAREL MANUFACTURING.

VISUAL-PLAN FASHION IS THE IDEAL TOOL FOR AN ACCURATE **MULTIPHASE** PLANNING AND CONTROL OF PROGRESS STATUS FOR PRODUCTION ORDERS IN CONFECTION WORK CENTERS (INTERNAL, EXTERNAL, SUB-CONTRACTORS), FROM CUTTING TO THE FINISHED PRODUCT.

VISUAL-PLAN FASHION IS A CLIENT-SERVER APPLICATION, MULTI-LANGUAGE, NATIVELY INTEGRATED WITH **G-TeX (PORINI ERP)**, BUT IT CAN BE ALSO INTERFACED WITH ANY OTHER SYSTEM.



Via Trento, 7 - 22074 Lomazzo (CO) - Italy  
Tel. 02 969410.1 - Fax 02 96779466 - info@porini.it - www.porini.it

# VISUAL-PLAN FASHION



## Functions:

Definition of the shop-floor structure:

- Production centers (internal, external sub-contractors).
- Production capacity in the time (for each center), in different measurement units (pieces, minutes of production...).
- Calendars (for each center).
- Compatibility among production centers and products.
- Classification of production centers by priorities or quality levels.

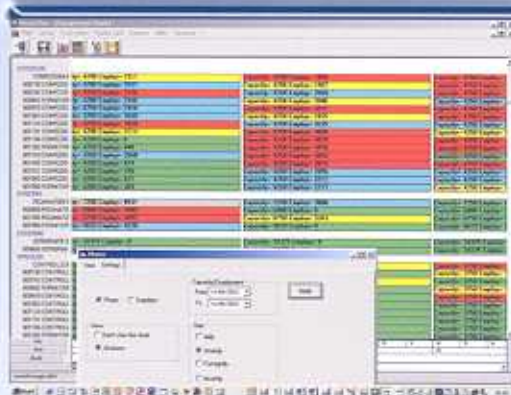
Visualization of over/under-loading of production capacity for each production work center (internal, external sub-contractors) part of the production process.

Visualization of the whole of the production orders and/or of a selected group and/or an individual one, showing the status of all phases of the production process.

Management in a graphic and assisted way of activities for allocation, shuffling and when necessary rescheduling of production orders and/or single phases of a production order.

This allocation can be automatic or semi-automatic, simulated or definitive, quickest or latest, taking in consideration several parameters.

Continuous and controlled availability of the global view for all production flows and necessary information.



## Features:

- GANTT chart, on screen, of the whole production situation, period per period.
- Possibility to modify as you want the time scale (hours, days, weeks, months).
- Visualization of overloads or production capacity availabilities.
- Filtered selection of orders and production orders (season, division, line, article, and so on...).
- Filtered selection of production centers (internal, external, sub-contractors).
- Possibility of moving operations backward or forward.
- Possibility of moving operations from one production center to another, with the compatibility condition.
- Status declaration of all P.O., phase by phase.
- What if analysis can be ran to examine what effect a certain action will have on a customers' delivery date.
- Showing operations in delay, real or potential.
- Possibility to make simulations.